

**Pick a Word**

Use the word or words in the box that completes each statement below.

clutch ✓	\ protective equipment,
front brake ✓	\ reflective,
headlight ✓	tap horn,
instability ✓	traction
moped ✓	tractor semi-trailer ✓
motor scooter ✓	tractor trailer ✓
no zones ✓	traffic noise ✓

- \_\_\_\_\_ 1. A motorcycle's small size, handling characteristics, and \_\_\_ can cause problems in traffic.
- \_\_\_\_\_ 2. Large blind spots in front, to the sides, and to the rear of a large truck are known as \_\_\_.
- \_\_\_\_\_ 3. Even during daylight hours, it's easier for motorists to identify motorcyclists if cyclists have their \_\_\_ on.
- \_\_\_\_\_ 4. Helmets, gloves, and long sleeves and pants are examples of \_\_\_.
- \_\_\_\_\_ 5. A two-wheeled vehicle that can be driven by a motor or pedal is known as a \_\_\_.
- \_\_\_\_\_ 6. A truck that has a powerful tractor that pulls a separate trailer is called a \_\_\_.
- \_\_\_\_\_ 7. A hand lever located on the right handlebar of a motorcycle controls the \_\_\_.
- \_\_\_\_\_ 8. Motorcyclists can have balance problems if they do not coordinate the throttle and \_\_\_ properly.
- \_\_\_\_\_ 9. To be more visible, motorcyclists should wear \_\_\_ clothing when riding at night.
- \_\_\_\_\_ 10. The most common size tractor trailer is called the \_\_\_.
- \_\_\_\_\_ 11. A low-powered two-wheeled vehicle that requires no shifting is known as a \_\_\_.
- \_\_\_\_\_ 12. Before passing a motorcyclist, \_\_\_ to remind the motorcyclist you are there.
- \_\_\_\_\_ 13. Helmets, the noise of the cycle, and \_\_\_ make it difficult for motorcyclists to hear.
- \_\_\_\_\_ 14. In adverse weather conditions, reduced \_\_\_ is far more critical for motorcyclists than for drivers of other types of vehicles.

**Test Your Knowledge**

Read the statements below and check whether each motorcyclist's roadway situation is safe or unsafe.

1. Riding in wheel track of a vehicle ahead on a wet roadway
2. Applying the front brake and locking the front wheel
3. Increasing the following distance
4. Riding on a lane line
5. Crossing railroad tracks at a right angle
6. Passing at an intersection
7. Riding side-by-side when making a turn
8. Keeping headlights on at all times
9. Riding in a driver's blind spot
10. Riding between lines of moving vehicles

	Safe	Unsafe
1.		
2.		
3.		
4.		
5.		
6.		
7.		
8.		
9.		
10.		

**Study Each Statement Below**

Check whether the statement is correct or incorrect.

1. There is a high incidence of injuries and deaths for motorcyclists because motorcycles provide little or no protection.
2. It is a good idea for motorists following motorcyclists to maintain greater following distances during windy conditions.
3. Experienced motorcyclists often ride in the left portion of a lane, but it is actually better if they ride in the right portion of a lane.
4. Increasing your following distance between you and a large truck ahead provides additional visibility around the truck.
5. Car and truck drivers have more difficulty judging the speed and position of a motorcycle at night than during the day.
6. A helmet restricts a motorcyclist's vision and should only be worn when riding on an expressway.
7. The rear brake supplies 70 percent of a motorcycle's braking power.
8. When riding in groups, motorcyclists should always be sure to ride single file.
9. The safest and best way to learn to ride a motorcycle is to ask a friend who rides to teach you.
10. Most car-motorcycle conflicts occur on curves on rural roadways.

	Correct	Incorrect
1.		
2.		
3.		
4.		
5.		
6.		
7.		
8.		
9.		
10.		

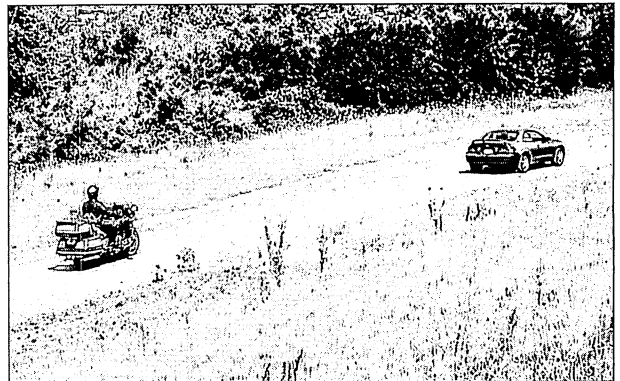
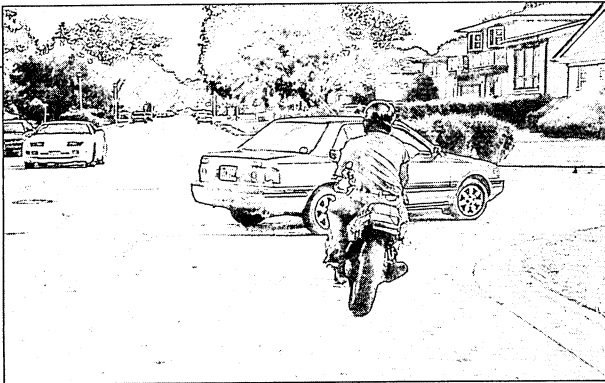
**Check True or False**

1. Cyclists should have their headlights on day and night as it improves their ability to be seen.
2. When driving around or near bicyclists, it is a good idea to keep extra space between your vehicle and the bicyclist.
3. Mopeds generally travel faster than motor scooters.
4. Prior to passing a bicycle or motorcycle, you should tap your horn.
5. Pedestrians are more vulnerable than motorcyclists.
6. Prior to leaving an alley, vehicles should stop between the sidewalk and the street, just prior to entering the street.
7. On wet roads, large trucks have shorter stopping distances than cars.
8. Vehicles are encouraged to back into any type of parking stall in a parking lot.
9. Vehicles going in all directions on a divided highway are required to stop whenever a school bus has stopped with its red lights on.
10. When meeting an oncoming "eighteen wheeler," you should move as far left as you can.

	True	False
1.		
2.		
3.		
4.		
5.		
6.		
7.		
8.		
9.		
10.		

**Use the Picture**

Study the pictures and answer the questions below.



1. What could the driver of the car have done to avoid this conflict?

\_\_\_\_\_

\_\_\_\_\_

2. What could the motorcyclist have done to avoid this situation?

\_\_\_\_\_

3. What problem might this motorcyclist experience on this gravel road and why?

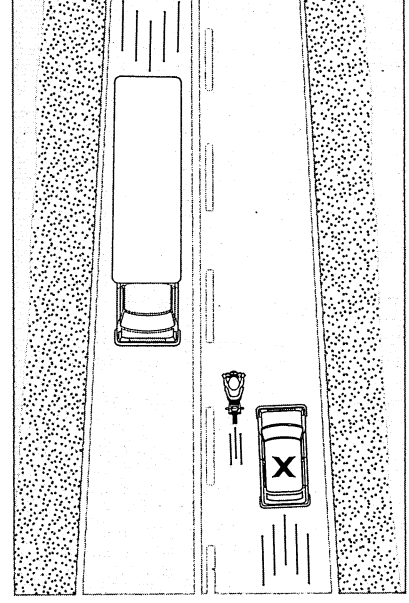
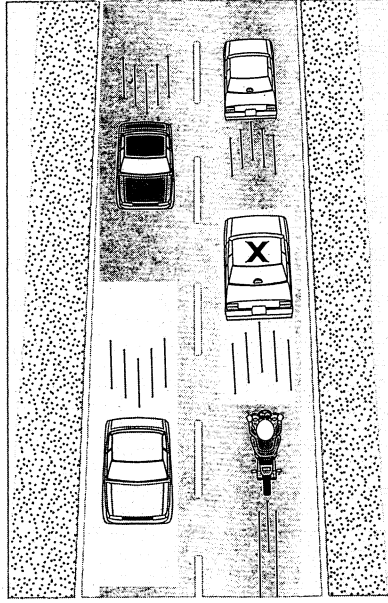
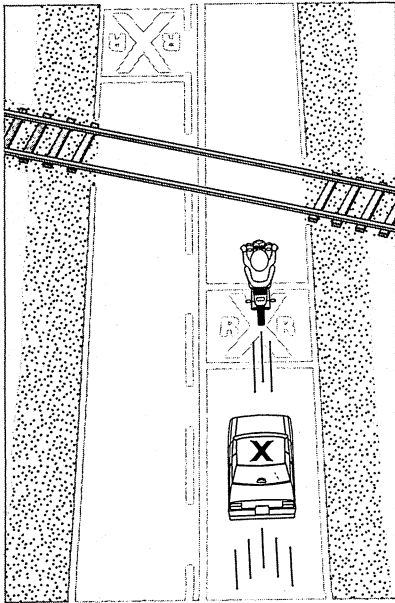
\_\_\_\_\_

4. What following distance should this motorcyclist use on this roadway?

\_\_\_\_\_

**Use the Pictures**

Examine the pictures below and write the mistakes made by each motorcyclist. What action should driver X take to avoid a collision?

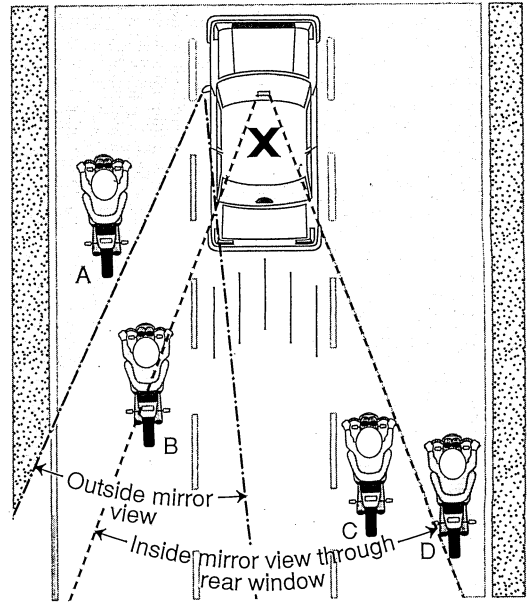


1. \_\_\_\_\_  
 \_\_\_\_\_  
 \_\_\_\_\_  
 \_\_\_\_\_
2. \_\_\_\_\_  
 \_\_\_\_\_  
 \_\_\_\_\_  
 \_\_\_\_\_
3. \_\_\_\_\_  
 \_\_\_\_\_  
 \_\_\_\_\_  
 \_\_\_\_\_

**Study the Diagram**

Analyze the position of the motorcycles in relation to vehicle X and answer the questions below.

- \_\_\_\_\_ 1. Which motorcyclists are in zones that cannot be seen in either mirror?
- \_\_\_\_\_ 2. Which motorcyclist is the most difficult to see as part of the visual search pattern?
- \_\_\_\_\_ 3. Which motorcyclist can be seen in the inside mirror?
- \_\_\_\_\_ 4. Which motorcyclist can be seen in the outside mirror?
- \_\_\_\_\_ 5. Which pair of motorcyclists, A and B or C and D, is positioned correctly in their lane?



© Pearson Education, Inc.